

FPE (Food Pathogen Enrichment) Broth



Medium used for the isolation and cultivation of *Campylobacter* spp.

• CONTENTS (Liter)

Soy Peptone	30.0 g
Meat Extract	10.0g
L-Cysteine	0.6 g
Pyruvic Acid	1.0 g
Sodium Bisulfite	0.5 g
Dipotassium Phosphate	0.8 g
Hemin	0.03 g
Final pH = 6.5 ± 0.2 at 25°C.	

• PROCEDURE

Suspend 42.93 G of powder in 1 L of distilled or deionized water. Heat to boiling until completely dissolved. Sterilize by autoclave at 121°C for 15 minutes. Cool to 45-50°C in water bath. Aseptically add 2 vials of FPE supplement. Mix well. Dispense in tube. If necessary dispense the medium before autoclave.

FPE supplement

1 vial contents (each vial is sufficient for 500 mL of medium)

Polymyxin B	2500 IU
Trimethoprim	0.005 g
Cycloheximide	0.05 g
Rifampicin	0.005 g

• INTERPRETATION

FPE (Food Pathogen Enrichment) Broth is a selective medium used for the isolation and cultivation of *Campylobacter* spp. Soy peptone and meat extract provide nitrogen, carbon, vitamins and minerals. L-Cysteine is growth factors required for the metabolism of bacteria. Sodium bisulfite is a reducing agent. Dipotassium Phosphate is buffering agent. Hemin provides essential nutrients for certain obligate anaerobes. Polymyxin B, trimethoprim and rifampicin inhibit most gram-negative organisms and many gram-positive organisms. Cycloheximide inhibits the growth of yeasts and fungi.

• TECHNIC

Inoculate the specimen with stab using a sterile needle to the medium. Shake gently for spreading microorganism. Incubate at 35 ± 2°C for 24 - 48 hours under microaerobic condition. Refer appropriate references for recommended test procedure.

• QUALITY CONTROL FOR USE

Dehydrated medium

Appearance: free-flowing, homogeneous

Color: beige

Prepared medium

Appearance: clear with a black precipitate

Color: light brown

Incubation conditions: 35 ± 2°C / 24 - 48 hours under microaerobic condition

Microorganism	ATCC	Inoculum CFU	Growth
<i>Campylobacter jejuni</i>	33291	50-100	good
<i>Escherichia coli</i>	25922	≥10 ³	inhibited

• STORE

The powder is very hygroscopic. Store the powder at room temperature, in a dry environment, in its original container tightly closed and use it before the expiry date on the label or until signs of deterioration or contamination are evident. Store prepared medium at 2-8°C.

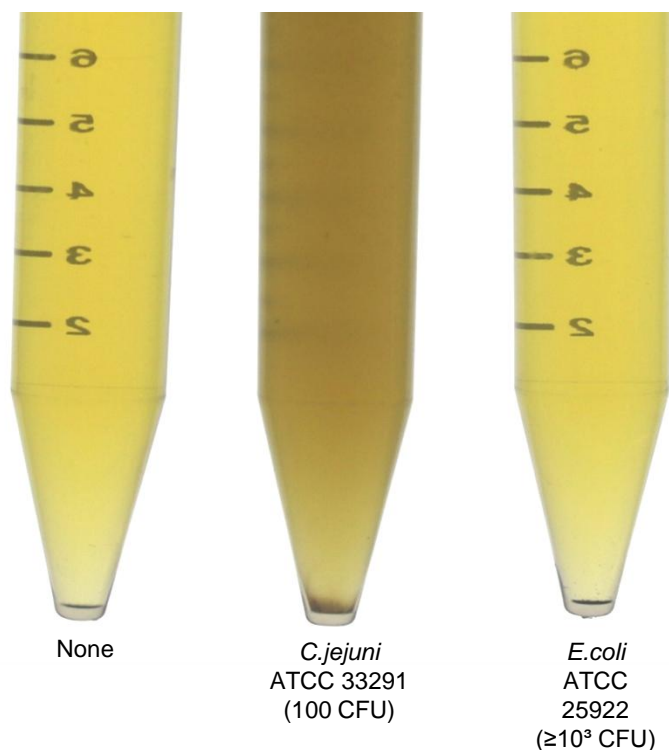
• REFERENCES

1. International Journal of Food Microbiology 163 (2013) 41-46.

• PACKAGE

Cat. No : MB-F0895 FPE (Food Pathogen Enrichment) Broth	500 G
--	-------

• MICROBIAL CULTURE IMAGES



Incubation conditions : $35 \pm 2^\circ\text{C}$ 24 - 48h under microaerobic condition